



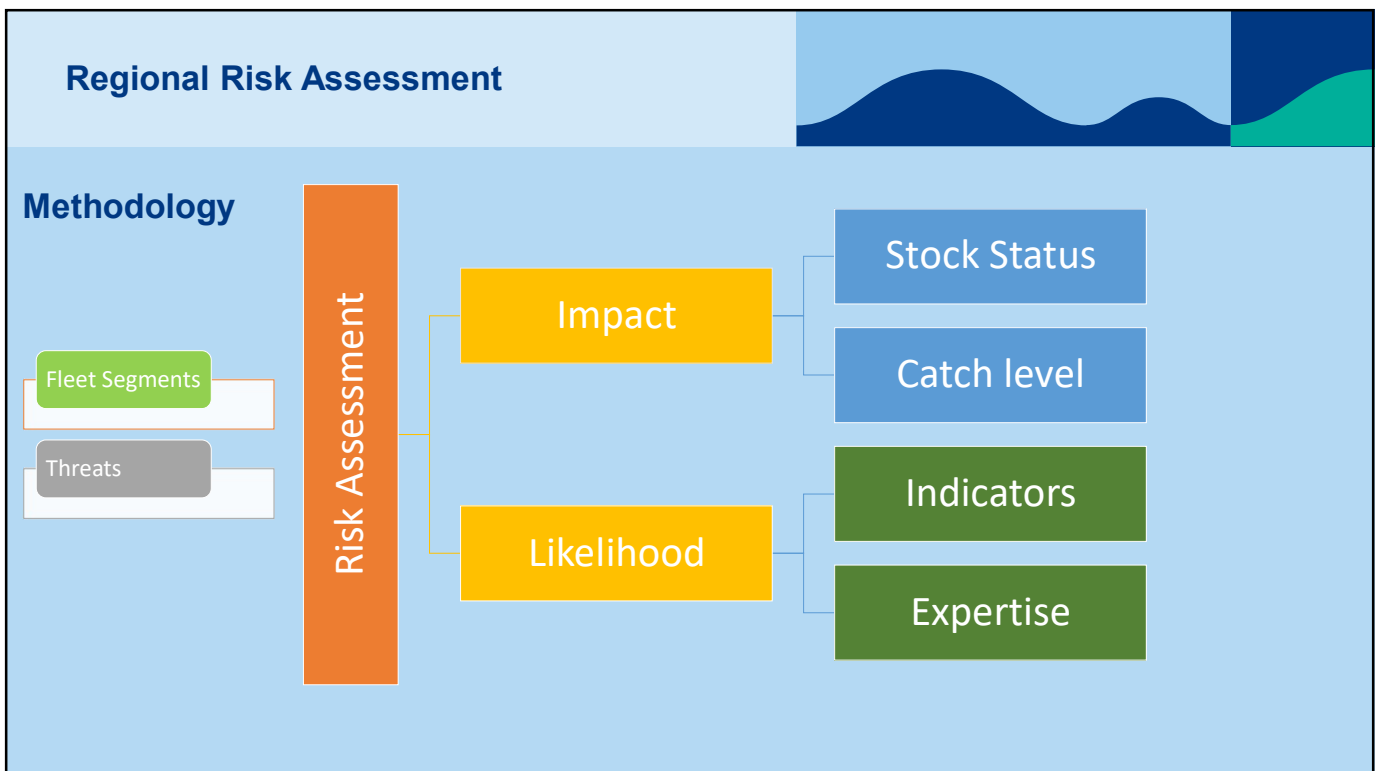
EFCA
European Fisheries Control Agency

**Baltic Sea
Joint Deployment Plan**

Baltic Sea Advisory Council
20/01/2021



1



2

Regional Risk Assessment

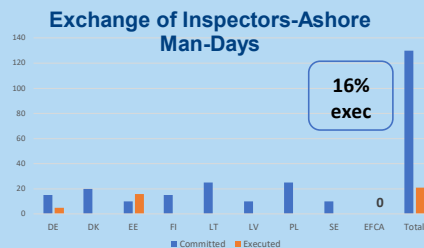
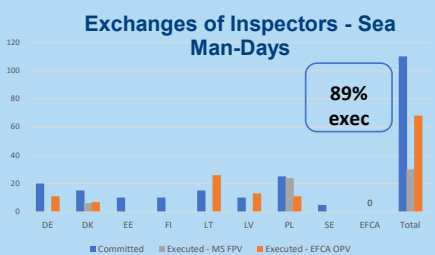
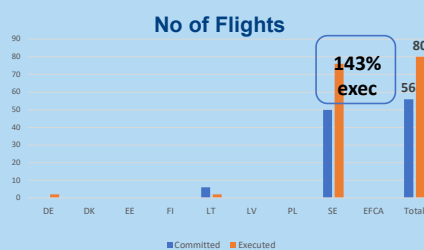
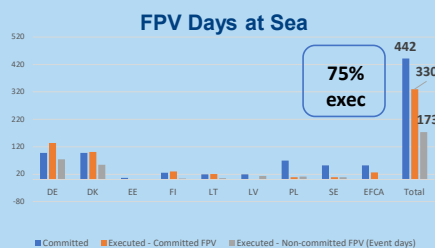
Results in 2020

GEAR & SEGMENTS			LANDING OBLIGATION	MISRECORDING	ILLEGAL GEAR	OTHER THREATS	
GEAR GROUP	GEAR DEFINITION	AREA	RISK LEVEL	RISK LEVEL	RISK LEVEL	RISK LEVEL	COMMENTS
OT (≥105)	Demersal Active	22-24	HIGH	HIGH	MEDIUM	HIGH	Fishing in temporal closed areas
SDN (≥105)		22-24	LOW	LOW	LOW		
OT (≥105)		25-27	VERY HIGH	VERY HIGH	MEDIUM	HIGH	Fishing in temporal closed areas
OT, PT (32≤ and <90)	Pelagic active	22-27	MEDIUM	VERY HIGH	MEDIUM	MEDIUM	
OT, PT (16≤ and <32)		22-27	LOW	MEDIUM	LOW	LOW	
OT, PT (16≤ and <105)		28-32	MEDIUM	VERY HIGH	MEDIUM		
GN (≥157)	Salmon	22-29	LOW	MEDIUM	LOW	LOW	
LL		22-29	LOW	HIGH	LOW	LOW	
FIX (nat. rules)		22-32	MEDIUM	HIGH	MEDIUM	HIGH	Fishing in seasonal closed areas
GN (≥110), LL	Demersal Passive	22-24	MEDIUM	MEDIUM	MEDIUM	HIGH	Fishing in temporal closed areas
GN (≥110), LL GN (32≤ and <110), FIX (national rules)		25-27	MEDIUM	MEDIUM	MEDIUM	HIGH	Fishing in temporal closed areas
Recreational Fisheries	Other	22-24		MEDIUM		HIGH	Need to quantify the catch (related to bag limits, identification of species caught, etc.). Illegal selling of the catch
Eel fisheries		22-32		VERY HIGH	VERY HIGH		

3

JDP 2020 Baltic Sea

Deployed Control Means and exchanges of Inspectors



- Exchanges at sea remained a strong feature of the Baltic JDP but mostly in the earlier part of this year.
- Shore exchanges were lower than would be expected but they have been impacted by the Covid situation.



Source : JADE August 2020

4

Specific Actions 2020

Main actions	Main Outcomes
Control and monitoring compliance with the LO provisions and the emergency measures (if applicable) for COD, including by-catch limits and other derogations	<ul style="list-style-type: none"> • 196 inspections, 56 at sea and 140 ashore. • 33 Last Hauls with 4 follow-up inspections ashore. • Issues in relation to the interpretation of by-catch or directed fishery were resolved and the closure observed.
Control and monitoring the possible misrecording of HER and SPR	<ul style="list-style-type: none"> • In March 192 inspections, 91 inspections on the assigned fleet segments. 30 sampled inspections. • In November 268 inspections, 103 inspections on the assigned fleet segments. 92 sampled inspections.
Control and monitoring of the possible misrecording and illegal fishing SAL	<ul style="list-style-type: none"> • Detailed next...

SALMON 2020

Baltic salmon is caught in all areas of the Baltic Sea.

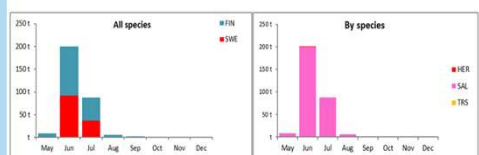
Commercial fisheries with gill net and lines, as well as traps.

Risk assessment identified 2 distinct elements requiring control through the Baltic Sea JDP.

- One in the long line fishery.
- One in the trap fishery.

Specific Actions were established for both.

SALMON 2020 Fixed gear

Catches 2019⁴

References: TAC 2019, 2020 catches (2019) logbook figures from MS, stock status from 2019 ICES advice.

Peaks of activity identified as June and July.

FIN and SWE are the main players.

Specific Action established, June and July (inclusive).

Area: Baltic Sea ICES sub-divisions 26-32

Gear: Segment of vessels using fixed gears targeting salmon (FIX)

Purpose: Control and monitoring of the possible misrecording and illegal fishing of salmon (SAL)

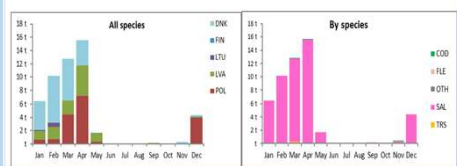
Outcome:

117 inspections on fixed gear with SAL.
No infringements detected.



7

SALMON 2020 Long line fishery

Catches 2019⁵

References: TAC 2019, 2020 catches (2019) logbook figures from MS, stock status from 2019 ICES advice.

Peaks of activity identified as March April and December.

DNK and POL are the main players.

Specific Action established, March – May (inclusive).

Area: Baltic Sea ICES sub-divisions 25-26

Gear: Pelagic longlines targeting salmon (LL, LHP, LHM, LLS, LLD, LL, LTL, LX)

Purpose: Control and monitoring of the catch composition of SAL/TRS

Outcome:

Covid had a major influence as MS locked down for the period.

Only 69 landings inspected with SAL, no TRS identified.
Of those only 28 were liners, no infringements detected.



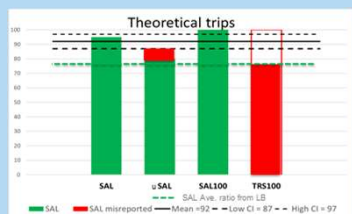
8

Specific action on Salmon fisheries



To monitor possible misrecording

Period Nov 2019 - May 2020 for Longline fisheries operating in SD 25-26



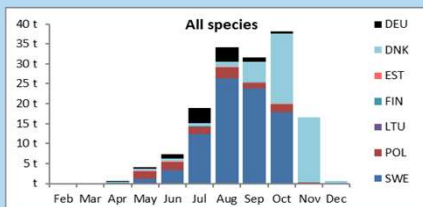
ICES subdi- vision	LOA	CI - 2020	Misreported trips ratio			Misreported catch ratio		
			No. Trips outside	Total no. Trips	MTR (%)	Misreported (kg)	Total catch (kg)	MCR (%)
25	<12m	99.8-100	41	166	24.7	2153	10441	20.6
	>12m	100-100	2	67	3.0	25	3182	0.8
26	<12m	59.3-98.2*	3	16	18.8	358	726	49.3
	>12m	100-100	6	89	6.7	31	10607	0.3

Main findings

Higher misreporting takes place in vessels <12 m when compared with vessels ≥ 12 m in all SD
Smaller vessels have different logbook requirement making difficult to assess the quality of the reported data

9

Eel fishery



Based on catch data from 2019

Peaks of activities during summer-autumn

DNK and SWE are the main players

Pound nets and fyke nets the main fishing gears (75% of all reported catches)

- In 2020 there was not a JDP action dedicated to ELE.
- Some ELE fisheries controls were reported to EFCA.
 - In total 14 946 kg of ELE was inspected ashore in 17 inspections from DEU, DNK and SWE with no infringements detected.
 - At sea 1 010 kg of ELE was inspected by DNK with no infringements detected.
 - SWE recorded 38 instances where unidentified fyke nets were detected. This is illegal unmarked gear.
 - One inspector exchange between DNK and SWE was carried out in relation to control of ELE.
- Eel Workshop organised on 25 August to develop concrete proposals on eel fisheries for Specific Actions to integrate in the BS JDP 2021. Main outcome was:
 - Focused control actions around the closed period to detect illegal gear and misreporting, promoting the use of RPAS (drones)
 - Improve traceability by promoting exchange of eel catches information among MS
 - Focused trainings for inspectors on control and monitoring of eel fisheries to exchange best practices



10

JDP 2021

3 Specific Actions relevant to Salmon proposed for 2021:

- Monitoring the misrecording, including by small vessels (2 actions).
- Monitoring of fishing activities in closed seasons, before and after the fishing season.

1 Specific Action focused on eel proposed for 2021:

- Monitoring the use of illegal gear, and compliance with the closure of the fisheries for eel.
- Including inspectors' training and exchange of best practices on control of eel fisheries



11



12